

1. Scope of Repair

- a. Damaged skylight lens not included in scope of work. Note condition of skylight and report deficiencies to owner including cracks, fogging, condensation between lenses and missing or loose screws.
- b. Check existing curb flashing to insure it extends fully under skylight frame as typically required by membrane mfg. If not, confirm with owner regarding impact to any existing warranty prior to adding termination bar and sealant. Add 4" skirt metal.
- c. Probe all field and flashing seams for openings, voids or defects.
- d. Clean all flashings and seams to provide smooth contaminant free surface
- e. As needed, prime all seams and openings prior to installation of Garna-Flex.
- f. Seal all open voids with Garna-Flex. Where voids are greater than 1/8" fill with sealant.
- g. Apply Garna-Flex to all corners, seams, joints and transitions at an average thickness of 48 mil.
- h. Apply surface coating at an average thickness of manufacturers specified at the rate of application.
- i. Inspect complete repair for leaks.

1. Repair Materials

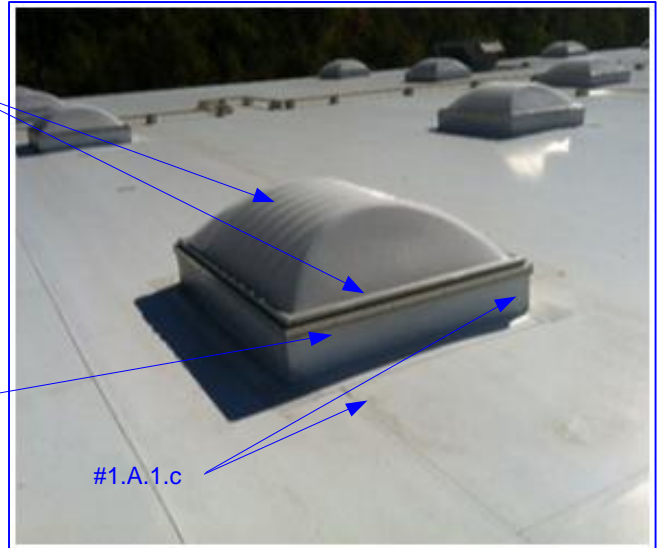
- a. Cleaners: Citrus Cleaner by RMI, Trisodium phosphate (TSP), Xylene.
- b. Primers: Garna-Prime, TPO Primer.
- c. Sealants: M-1, Urethane Sealant.
- d. Vapor Barrier: Garna-Flex by RMI. Field & Flashing membrane.
- e. Urethane Surface Coating: Garna-Thane by RMI. Silver.
- f. Urethane Surface Coating: Garna-White + by RMI. White.
- g. Sheet Metal: 24 Ga. Galv. paint grip.
- h. Flashing Tape: Eternaseam / Eternaseal by Eternabond.
- i. Flashing Fabric: Polymesh by RMI.
- i. Fasteners: Stainless Steel Screws.
- j. Repair Sheet: Min. 60 mil TPO.
- k. TPO Adhesive: Compatible with existing TPO.

REPAIR EVALUATION

#1.A.1.a

#1.A.1.b

#1.A.1.c



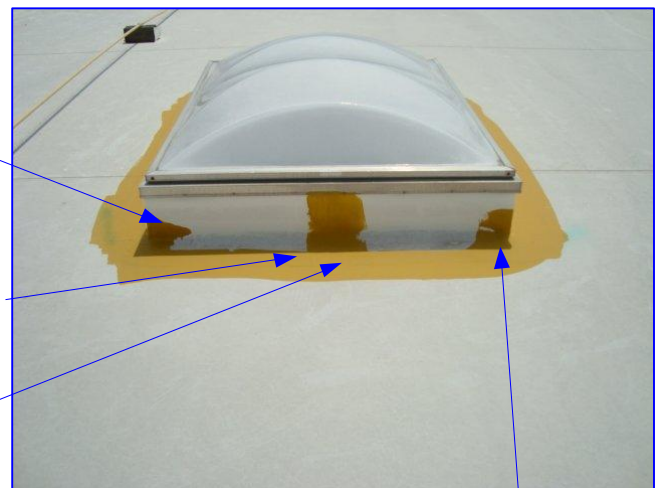
REPAIR PROCESS

#1.A.1.f

#1.A.1.e

#1.A.1.d

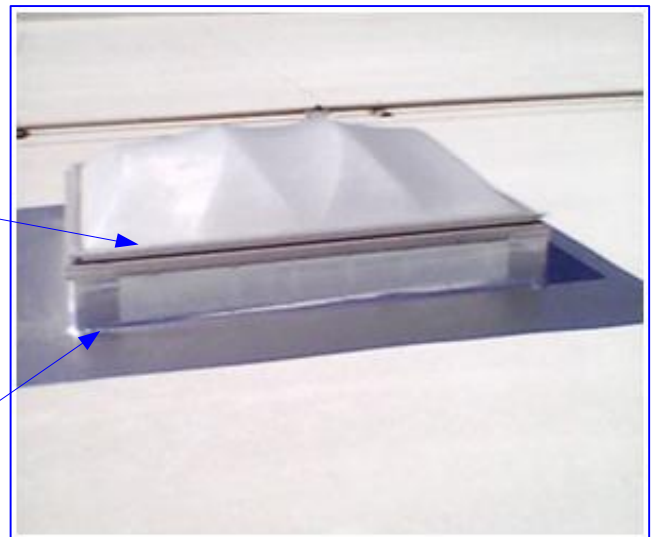
#1.A.1.g



FINISHED REPAIR

#1.A.1.h

#1.A.1.i



SCOPE OF WORK – SKYLIGHT FLASHING – TPO # 1

DATE: 7/19/12



FINISHED REPAIRS TO BE CONSISTENT WITH INTENT OF MATERIAL MANUFACTURERS RECOMMENDATIONS AND GOOD ROOFING PRACTICES. REPAIRS SHOWN FOR ILLUSTRATION. LISTED SCOPE OF REPAIR AND ACTUAL FIELD CONDITIONS MAY REQUIRE A VARIANCE FROM MFG PRINTED REQUIREMENTS AND IMPACT PERFORMANCE CRITERIA.

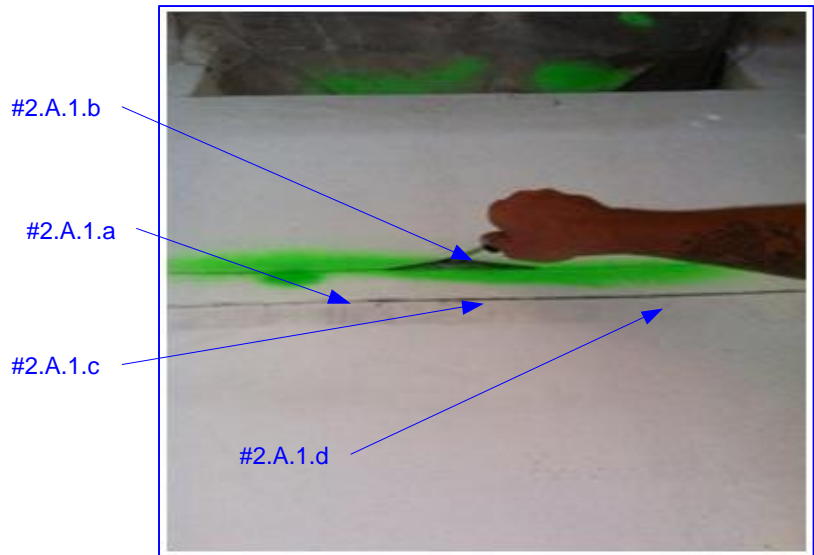
1. Scope of Repair

- a. Check for tears, rips, exposed scrim or other material defects. Confirm with owner regarding impact to any existing warranty prior to proceeding with repairs.
- b. Probe all field and flashing seams for openings, voids or defects.
- c. Clean all flashings and seams to provide smooth contaminant free surface
- d. As needed, prime all seams and openings prior to installation of Garna-Flex.
- e. Seal all open voids with Garna-Flex. Where voids are greater than 1/8" fill with sealant.
- f. Apply Garna-Flex to encapsulate, seams, and laps at an average thickness of 48 mil. Extend application equally on both sides of repair.
- g. Apply surface coating at an average thickness of manufacturers specified at the rate of application.
- h. Inspect complete repair for leaks.

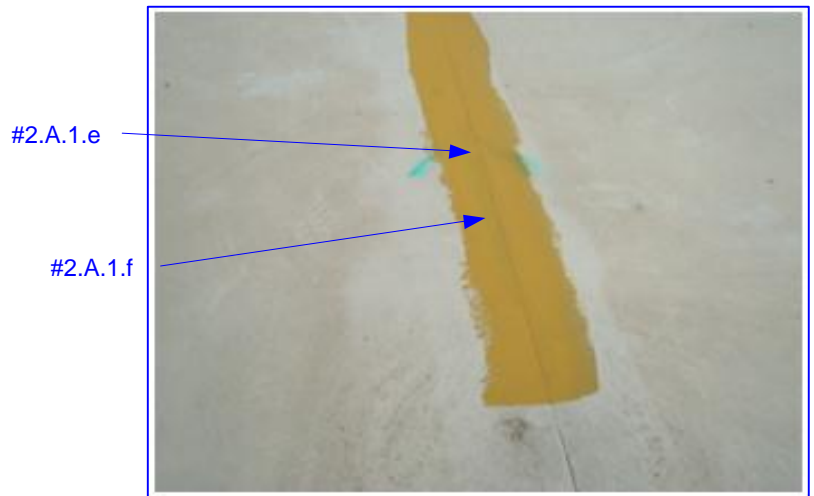
1. Repair Materials

- a. Cleaners: Citrus Cleaner by RMI, Trisodium phosphate (TSP), Xylene.
- b. Primers: Garna-Prime, TPO Primer.
- c. Sealants: M-1, Urethane Sealant.
- d. Vapor Barrier: Garna-Flex by RMI. Field & Flashing membrane.
- e. Urethane Surface Coating: Garna-Thane by RMI. Silver.
- f. Urethane Surface Coating: Garna-White + by RMI. White.
- g. Sheet Metal: 24 Ga. Galv. paint grip.
- h. Flashing Tape: Eternaseam / Eternaseal by Eternabond.
- i. Flashing Fabric: Polymesh by RMI.
- i. Fasteners: Stainless Steel Screws.
- j. Repair Sheet: Min. 60 mil TPO.
- k. TPO Adhesive: Compatible with existing TPO.

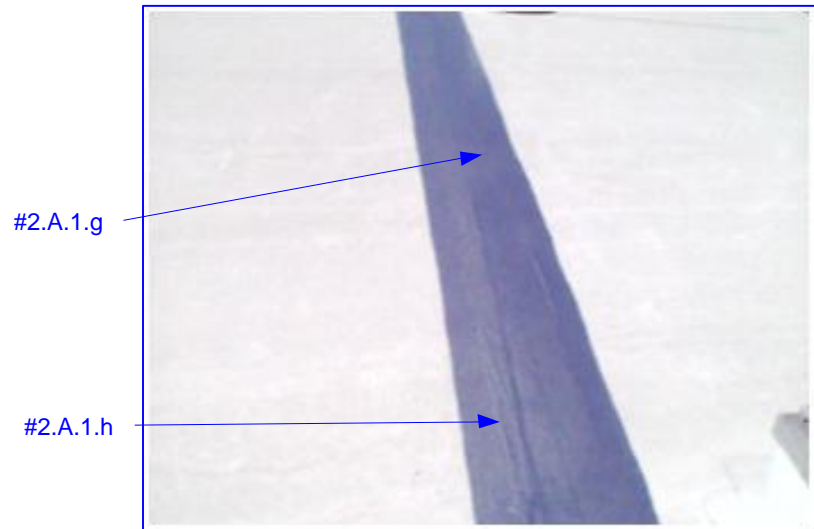
REPAIR EVALUATION



REPAIR PROCESS



FINISHED REPAIR



SCOPE OF WORK – SEAMS & LAPS – TPO # 2

DATE: 7/19/12



FINISHED REPAIRS TO BE CONSISTENT WITH INTENT OF MATERIAL MANUFACTURERS RECOMMENDATIONS AND GOOD ROOFING PRACTICES. REPAIRS SHOWN FOR ILLUSTRATION. LISTED SCOPE OF REPAIR AND ACTUAL FIELD CONDITIONS MAY REQUIRE A VARIANCE FROM MFG PRINTED REQUIREMENTS AND IMPACT PERFORMANCE CRITERIA.

1. Scope of Repair

a. Items shown for illustration depicting repair for a clad metal vent and prefabricated boot.

Check for tears, rips, exposed scrim or other material defects. Confirm with owner regarding impact to any existing warranty prior to proceeding with repairs.

b. Probe all boot and flashing seams for openings, voids or defects.

c. Clean all flashings and seams to provide smooth contaminant free surface.

d. As needed, prime prior to installation of Garna-Flex.

e. Seal all open voids with Garna-Flex. Where voids are greater than 1/8" fill with sealant.

f. Apply Garna-Flex to encapsulate base of flashing or entire flashing as may be required. Apply at an average thickness of 48 mil.

g. Apply surface coating at an average thickness of manufacturers specified at the rate of application.

h. Inspect complete repair for leaks.

1. Repair Materials

a. Cleaners: Citrus Cleaner by RMI, Trisodium phosphate (TSP), Xylene.

b. Primers: Garna-Prime, TPO Primer.

c. Sealants: M-1, Urethane Sealant.

d. Vapor Barrier: Garna-Flex by RMI. Field & Flashing membrane.

e. Urethane Surface Coating: Garna-Thane by RMI. Silver.

f. Urethane Surface Coating: Garna-White + by RMI. White.

g. Sheet Metal: 24 Ga. Galv. paint grip.

h. Flashing Tape: Eternaseam / Eternaseal by Eternabond.

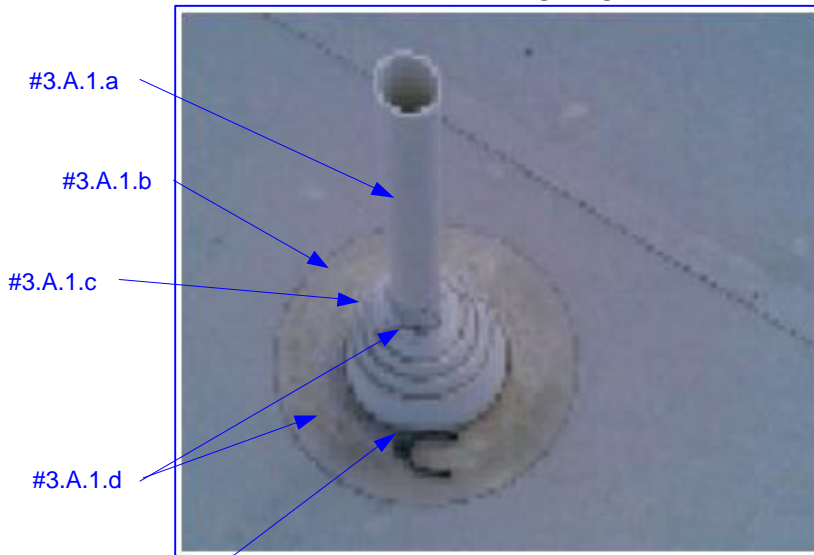
i. Flashing Fabric: Polymesh by RMI.

i. Fasteners: Stainless Steel Screws.

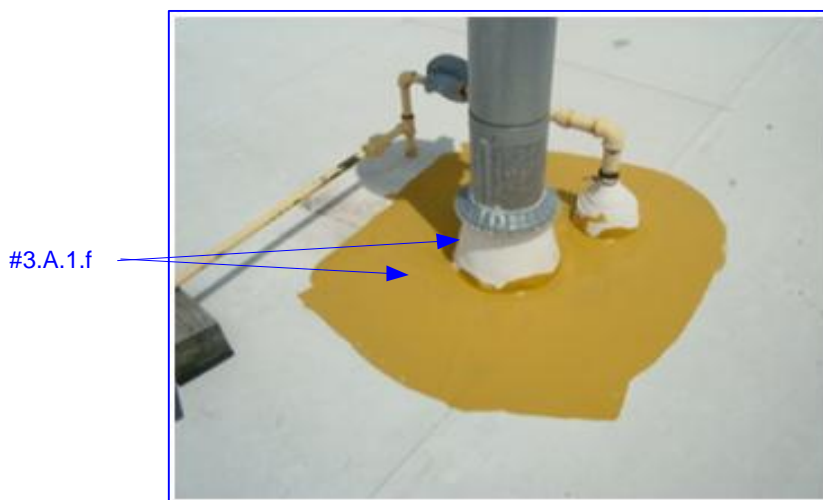
j. Repair Sheet: Min. 60 mil TPO.

k. TPO Adhesive: Compatible with existing TPO.

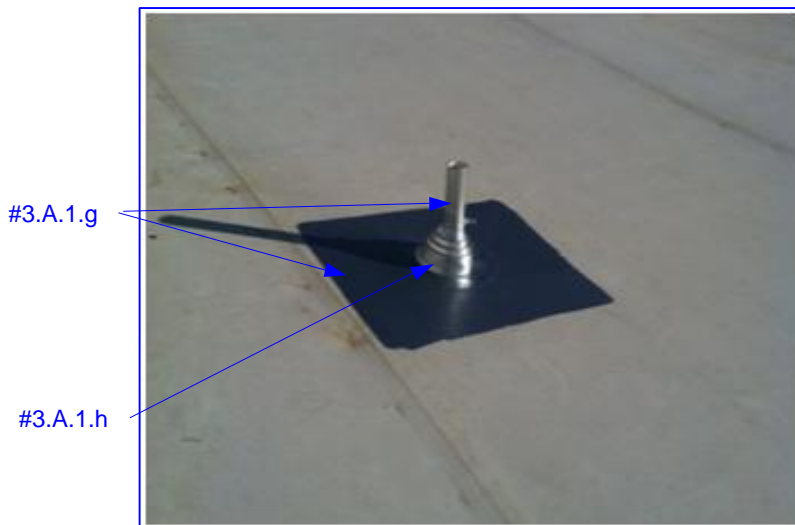
REPAIR EVALUATION



REPAIR PROCESS



FINISHED REPAIR



SCOPE OF WORK – TYPICAL PENETRATION – TPO # 3

DATE: 7/19/12

FINISHED REPAIRS TO BE CONSISTENT WITH INTENT OF MATERIAL MANUFACTURERS RECOMMENDATIONS AND GOOD ROOFING PRACTICES. REPAIRS SHOWN FOR ILLUSTRATION. LISTED SCOPE OF REPAIR AND ACTUAL FIELD CONDITIONS MAY REQUIRE A VARIANCE FROM MFG PRINTED REQUIREMENTS AND IMPACT PERFORMANCE CRITERIA.

1. Scope of Repair

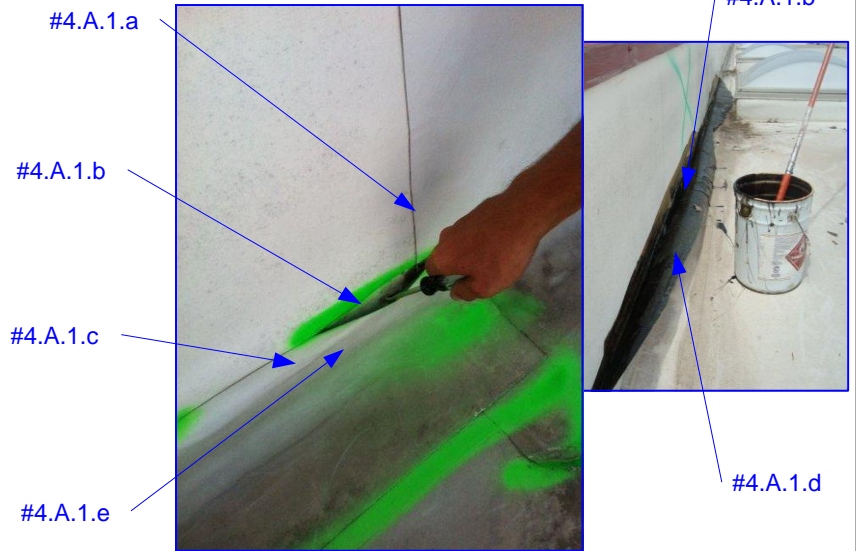
- a. Items shown for illustration depicting typical repairs at a wall flashing.

Check for tears, rips, exposed scrim or other material defects. Confirm with owner regarding impact to any existing warranty prior to proceeding with repairs.
- b. Probe all field and flashing seams for openings, voids or defects.
- c. Clean all flashings and seams to provide smooth contaminant free surface.
- d. Due the severity of the deficiency, a TPO adhesive may be required to seal and secure the existing sheet prior to installation of RMI materials.
- e. As needed, prime prior to installation of Garna-Flex.
- f. Seal all open voids with Garna-Flex. Where voids are greater than 1/8" fill with sealant.
- g. Apply Garna-Flex to encapsulate, seams, and laps at an average thickness of 48 mil. Extend application equally on both sides of repair.
- h. Apply surface coating at an average thickness of manufacturers specified at the rate of application.
- i. Inspect complete repair for leaks.

1. Repair Materials

- a. Cleaners: Citrus Cleaner by RMI, Trisodium phosphate (TSP), Xylene.
- b. Primers: Garna-Prime, TPO Primer.
- c. Sealants: M-1, Urethane Sealant.
- d. Vapor Barrier: Garna-Flex by RMI. Field & Flashing membrane.
- e. Urethane Surface Coating: Garna-Thane by RMI. Silver.
- f. Urethane Surface Coating: Garna-White + by RMI. White.
- g. Sheet Metal: 24 Ga. Galv. paint grip.
- h. Flashing Tape: Eternaseam / Eternaseal by Eternabond.
- i. Flashing Fabric: Polymesh by RMI.
- i. Fasteners: Stainless Steel Screws.
- j. Repair Sheet: Min. 60 mil TPO.
- k. TPO Adhesive: Compatible with existing TPO.

REPAIR EVALUATION



REPAIR PROCESS



FINISHED REPAIR



SCOPE OF WORK – TYPICAL WALL FLASHING – TPO # 4

DATE: 7/19/12

FINISHED REPAIRS TO BE CONSISTENT WITH INTENT OF MATERIAL MANUFACTURERS RECOMMENDATIONS AND GOOD ROOFING PRACTICES. REPAIRS SHOWN FOR ILLUSTRATION. LISTED SCOPE OF REPAIR AND ACTUAL FIELD CONDITIONS MAY REQUIRE A VARIANCE FROM MFG PRINTED REQUIREMENTS AND IMPACT PERFORMANCE CRITERIA.

1. Scope of Repair

- a. Items shown for illustration depicting typical repairs at either an existing target or location where a target would typically have been installed with original roof installation.

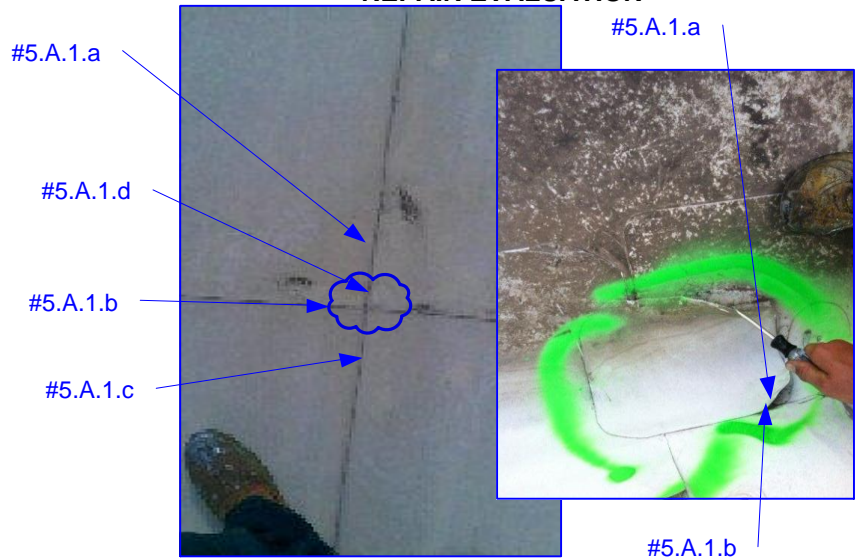
Confirm with owner regarding impact on any existing warranty prior to proceeding with repairs.

- b. Probe all seams and laps for openings, voids or defects.
- c. Clean all flashings and seams to provide smooth contaminant free surface.
- d. Depending on the severity of the deficiency, a TPO or flashing tape target may be required to seal the deficiency prior to installation of RMI materials.
- e. As needed, prime prior to installation of Garna-Flex.
- f. Seal all open voids with Garna-Flex. Where voids are greater than 1/8" fill with sealant.
- g. Apply Garna-Flex to encapsulate, seams, and laps at an average thickness of 48 mil. Extend application equally on both sides of repair.
- h. Apply surface coating at an average thickness of manufacturers specified at the rate of application.
- i. Inspect complete repair for leaks.

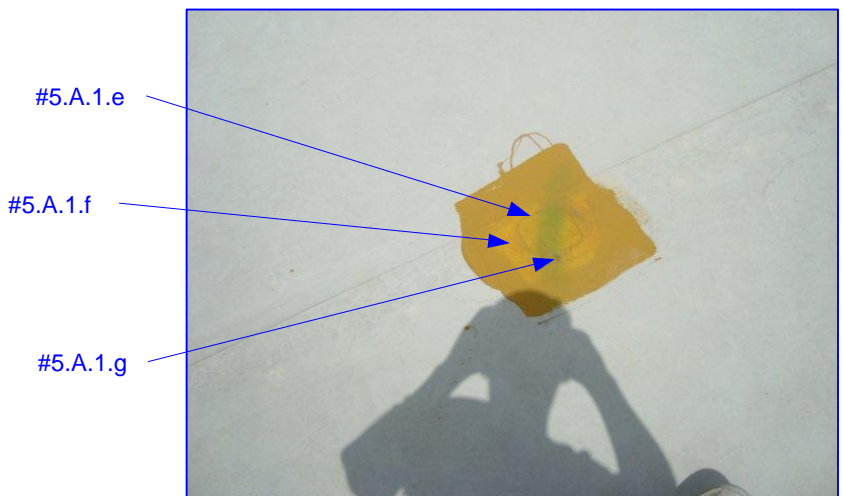
1. Repair Materials

- a. Cleaners: Citrus Cleaner by RMI, Trisodium phosphate (TSP), Xylene.
- b. Primers: Garna-Prime, TPO Primer.
- c. Sealants: M-1, Urethane Sealant.
- d. Vapor Barrier: Garna-Flex by RMI. Field & Flashing membrane.
- e. Urethane Surface Coating: Garna-Thane by RMI. Silver.
- f. Urethane Surface Coating: Garna-White + by RMI. White.
- g. Sheet Metal: 24 Ga. Galv. paint grip.
- h. Flashing Tape: Eternaseam / Eternaseal by Eternabond.
- i. Flashing Fabric: Polymesh by RMI.
- i. Fasteners: Stainless Steel Screws.
- j. Repair Sheet: Min. 60 mil TPO.
- k. TPO Adhesive: Compatible with existing TPO.

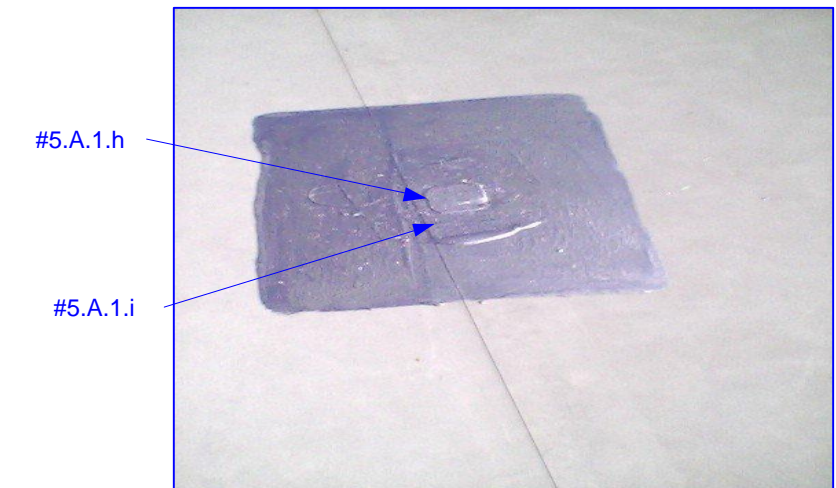
REPAIR EVALUATION



REPAIR PROCESS



FINISHED REPAIR



SCOPE OF WORK – TYPICAL TARGET PATCH – TPO # 5

DATE: 7/19/12

FINISHED REPAIRS TO BE CONSISTENT WITH INTENT OF MATERIAL MANUFACTURERS RECOMMENDATIONS AND GOOD ROOFING PRACTICES. REPAIRS SHOWN FOR ILLUSTRATION. LISTED SCOPE OF REPAIR AND ACTUAL FIELD CONDITIONS MAY REQUIRE A VARIANCE FROM MFG PRINTED REQUIREMENTS AND IMPACT PERFORMANCE CRITERIA.

1. Scope of Repair

- a. Items shown for illustration depicting typical repairs at a wall or thru-wall scupper. Repair equally applies to overflow scuppers.

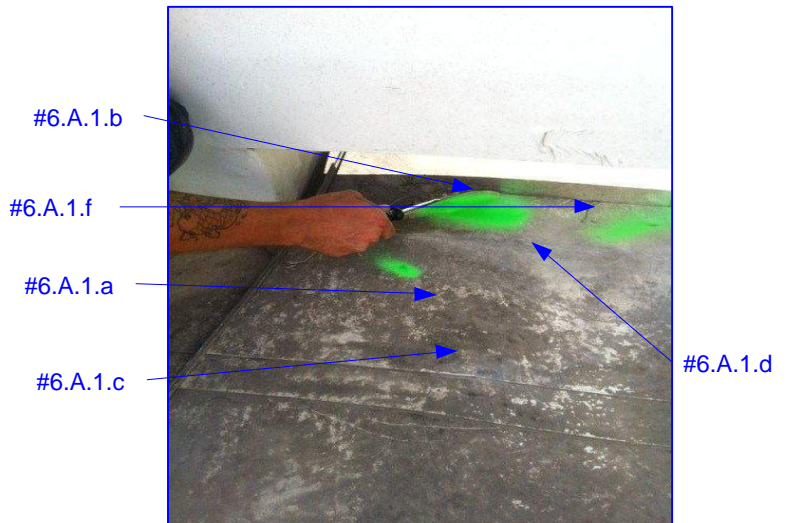
Check for tears, rips, exposed scrim or other material defects. Confirm with owner regarding impact to any existing warranty prior to proceeding with repairs.

- b. Probe all field and flashing seams for openings, voids or defects.
- c. Clean all flashings and seams to provide smooth contaminant free surface.
- d. Depending on the severity of the deficiency, a TPO patch or flashing tape may be required to seal the deficiency prior to installation of RMI materials.
- e. As needed, prime prior to installation of Garna-Flex.
- f. Seal all open voids with Garna-Flex. Where voids are greater than 1/8" fill with sealant.
- g. Apply Garna-Flex to encapsulate interior of scupper, seams, and laps at an average thickness of 48 mil. Extend application equally on both sides of repair.
- h. Apply surface coating at an average thickness of manufacturers specified at the rate of application.
- i. Inspect complete repair for leaks.

1. Repair Materials

- a. Cleaners: Citrus Cleaner by RMI, Trisodium phosphate (TSP), Xylene.
- b. Primers: Garna-Prime, TPO Primer.
- c. Sealants: M-1, Urethane Sealant.
- d. Vapor Barrier: Garna-Flex by RMI. Field & Flashing membrane.
- e. Urethane Surface Coating: Garna-Thane by RMI. Silver.
- f. Urethane Surface Coating: Garna-White + by RMI. White.
- g. Sheet Metal: 24 Ga. Galv. paint grip.
- h. Flashing Tape: Eternaseam / Eternaseal by Eternabond.
- i. Flashing Fabric: Polymesh by RMI.
- i. Fasteners: Stainless Steel Screws.
- j. Repair Sheet: Min. 60 mil TPO.
- k. TPO Adhesive: Compatible with existing TPO.

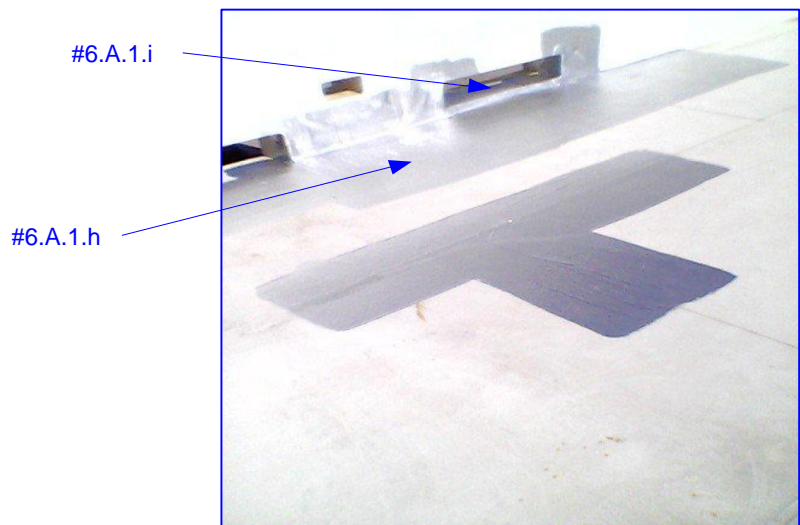
REPAIR EVALUATION



REPAIR PROCESS



FINISHED REPAIR



SCOPE OF WORK – TYPICAL SCUPPER – TPO # 6

DATE: 7/19/12

FINISHED REPAIRS TO BE CONSISTENT WITH INTENT OF MATERIAL MANUFACTURERS RECOMMENDATIONS AND GOOD ROOFING PRACTICES. REPAIRS SHOWN FOR ILLUSTRATION. LISTED SCOPE OF REPAIR AND ACTUAL FIELD CONDITIONS MAY REQUIRE A VARIANCE FROM MFG PRINTED REQUIREMENTS AND IMPACT PERFORMANCE CRITERIA.

1. Scope of Repair

- a. Connects & disconnects for HVAC or other mechanical units are not included in the scope of work. Note condition of equipment and report deficiencies to owner including condensation drain lines, missing or improperly installed counterflashing, leaks due to units.
- b. Check existing TPO curb flashing to insure it extends fully under factory or other counterflashing. If not, confirm with owner regarding impact to any existing warranty prior to adding termination bar, sealant, skirt metal, etc. in order to complete repair.
- c. Probe all field, corner and curb flashing seams for openings, voids or defects.
- d. Clean all flashings and seams to provide smooth contaminant free surface.
- e. As needed, prime all seams and openings prior to installation of Garna-Flex.
- f. Seal all open voids with Garna-Flex. Where voids are greater than 1/8" fill with sealant.
- g. Apply Garna-Flex to all corners, seams, joints and transitions at an average thickness of 48 mil.
- h. Apply surface coating at an average thickness of manufacturers specified at the rate of application.
- i. Inspect complete repair for leaks.

1. Repair Materials

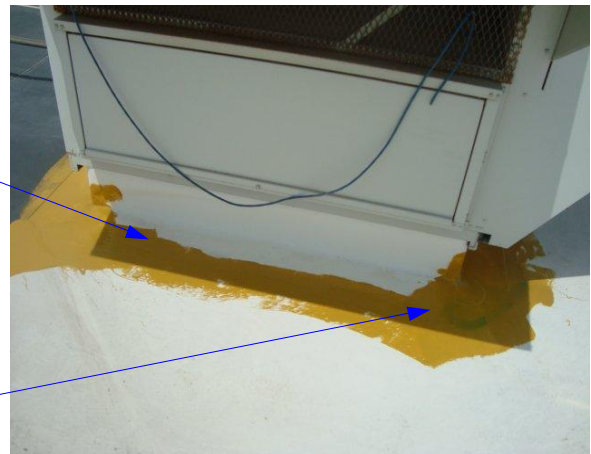
- a. Cleaners: Citrus Cleaner by RMI, Trisodium phosphate (TSP), Xylene.
- b. Primers: Garna-Prime, TPO Primer.
- c. Sealants: M-1, Urethane Sealant.
- d. Vapor Barrier: Garna-Flex by RMI. Field & Flashing membrane.
- e. Urethane Surface Coating: Garna-Thane by RMI. Silver.
- f. Urethane Surface Coating: Garna-White + by RMI. White.
- g. Sheet Metal: 24 Ga. Galv. paint grip.
- h. Flashing Tape: Eternaseam / Eternaseal by Eternabond.
- i. Flashing Fabric: Polymesh by RMI.
- i. Fasteners: Stainless Steel Screws.
- j. Repair Sheet: Min. 60 mil TPO.
- k. TPO Adhesive: Compatible with existing TPO.

REPAIR EVALUATION



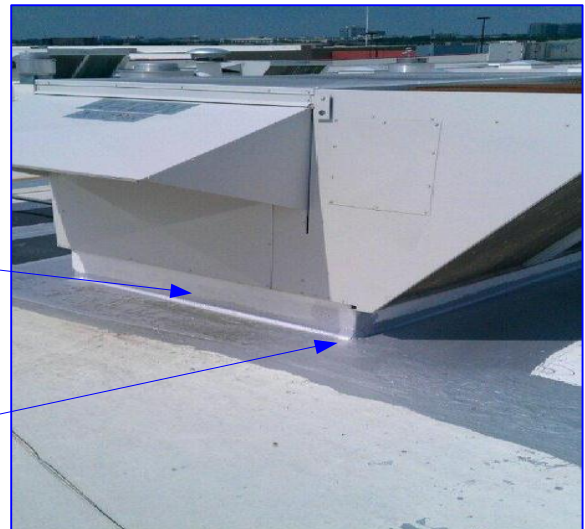
- #7.A.1.a
- #7.A.1.b
- #7.A.1.c
- #7.A.1.f
- #7.A.1.d

REPAIR PROCESS



- #7.A.1.e
- #7.A.1.g

FINISHED REPAIR



- #7.A.1.i
- #7.A.1.h



SCOPE OF WORK – CURB MOUNTED HVAC / MECHANICAL – TPO # 7

DATE: 7/19/12

FINISHED REPAIRS TO BE CONSISTENT WITH INTENT OF MATERIAL MANUFACTURERS RECOMMENDATIONS AND GOOD ROOFING PRACTICES. REPAIRS SHOWN FOR ILLUSTRATION. LISTED SCOPE OF REPAIR AND ACTUAL FIELD CONDITIONS MAY REQUIRE A VARIANCE FROM MFG PRINTED REQUIREMENTS AND IMPACT PERFORMANCE CRITERIA.

1. Scope of Repair

- a. Items shown for illustration depicting typical repairs at an interior metal drain. Plastic drains are not compatible with this scope of repair.

Confirm condensation lines extend to interior of drain bowl. Check for missing strainer baskets which may be an indication of a clogged drain backing up and forcing water under a clamping ring or bowl connections. Check for cracked drain bowls or broken clamping rings. Confirm all with owner regarding impact on existing warranty or need for a plumbing contractor prior to proceeding with repairs.

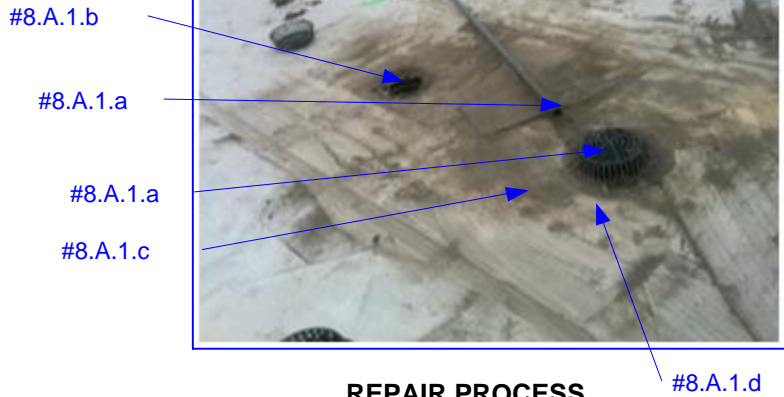
- b. Ill-fitting clamping rings may require removal and resetting as part of repair.
- c. Probe all adjacent field and flashing seams for openings, voids or defects.
- d. Clean all flashings and seams to provide smooth contaminant free surface.
- e. As needed, prime prior to installation of Garna-Flex.
- f. Seal all open voids with Garna-Flex. Where voids are greater than 1/8" fill with sealant including interior of drain bowl at underside of clamping ring and existing flashing membrane.
- g. Apply Garna-Flex to encapsulate interior of drain ring and bowl if required in addition to field seams, and laps at an average thickness of 48 mil. Extend application equally on both sides of repair.
- h. Apply surface coating at an average thickness of manufacturers specified at the rate of application.

i. Inspect complete repair for leaks.

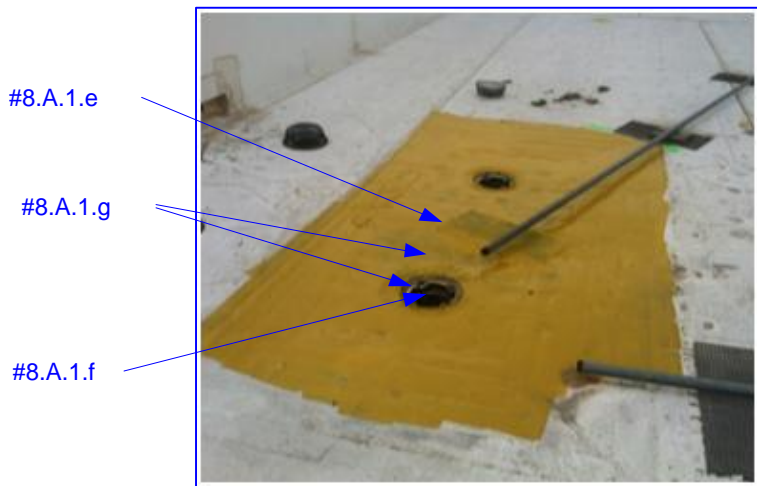
1. Repair Materials

- a. Cleaners: Citrus Cleaner by RMI, Trisodium phosphate (TSP), Xylene.
- b. Primers: Garna-Prime, TPO Primer.
- c. Sealants: M-1, Urethane Sealant.
- d. Vapor Barrier: Garna-Flex by RMI. Field & Flashing membrane.
- e. Urethane Surface Coating: Garna-Thane by RMI. Silver.
- f. Urethane Surface Coating: Garna-White + by RMI. White.
- g. Sheet Metal: 24 Ga. Galv. paint grip.
- h. Flashing Tape: Eternaseam / Eternaseal by Eternabond.
- i. Flashing Fabric: Polymesh by RMI.
- i. Fasteners: Stainless Steel Screws.
- j. Repair Sheet: Min. 60 mil TPO.
- k. TPO Adhesive: Compatible with existing TPO.

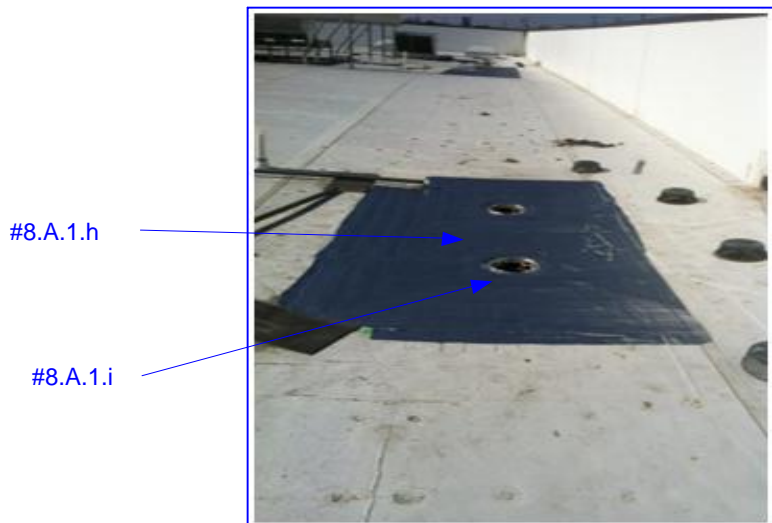
REPAIR EVALUATION



REPAIR PROCESS



FINISHED REPAIR



SCOPE OF WORK – TYPICAL SCUPPER – TPO # 8

DATE: 7/19/12

FINISHED REPAIRS TO BE CONSISTENT WITH INTENT OF MATERIAL MANUFACTURERS RECOMMENDATIONS AND GOOD ROOFING PRACTICES. REPAIRS SHOWN FOR ILLUSTRATION. LISTED SCOPE OF REPAIR AND ACTUAL FIELD CONDITIONS MAY REQUIRE A VARIANCE FROM MFG PRINTED REQUIREMENTS AND IMPACT PERFORMANCE CRITERIA.